

## CONTENTS

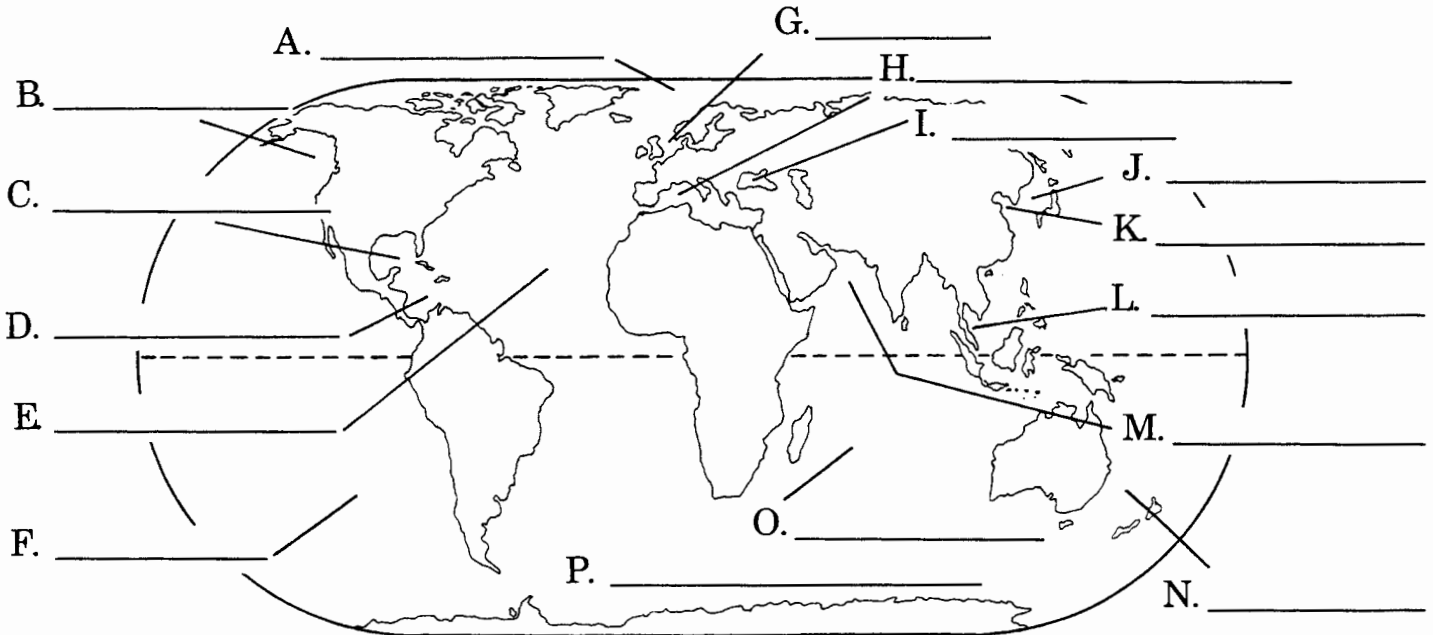
Oceans and Seas of the World .....	1*
Oceans and Seas of the World .....	1a
Major Ocean Currents .....	2*
Major Ocean Currents .....	2a
The Ocean Profile .....	3*
The Ocean Profile .....	3a
Features of the Coastline .....	3b
Waves .....	4*
Waves .....	4a
Tides .....	4b
Characteristics of Ocean Water .....	5*
Characteristics of Ocean Water .....	5a
Pressure and Temperature of Ocean Water .....	5b
Marine Plant Life .....	6*
Marine Plant Life .....	6a
Ocean “Life Zones” .....	6b
Marine Animal Life: Shallow Water .....	7*
Marine Animal Life: Shallow Water .....	7a
Marine Animal Life: Deep Water .....	8*
Marine Animal Life: Deep Water .....	8a
Submersibles: Deep-Diving Vehicles .....	9*
Submersibles: Deep-Diving Vehicles .....	9a
Snorkeling and Scuba Diving .....	10*
Snorkeling and Scuba Diving .....	10a
Tools of Oceanography .....	11*
Tools of Oceanography .....	11a
The Ocean’s Storehouse .....	12*
The Ocean’s Storehouse .....	12a

For final testing and review:

A Last Look—Part I .....	I
A Last Look—Part II .....	II
A Last Look—Part III .....	III
A Last Look—Part IV .....	IV

\* Full-color transparencies are found at the back of the book. Each transparency should be used to introduce the corresponding unit.

# Oceans and Seas of the World



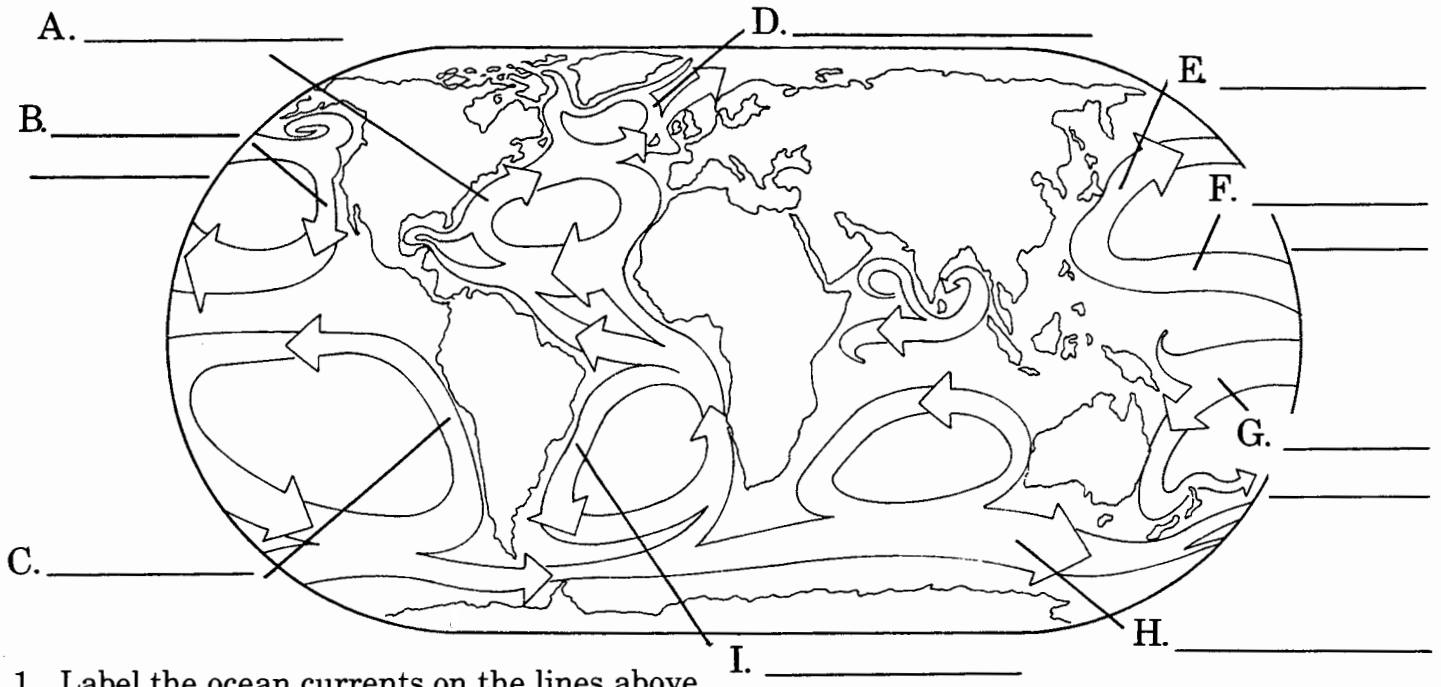
1. Label the oceans and seas on the lines above.
2. Circle the two large bodies of water located between North and South America.
3. Write the word or words that will make each sentence a true statement.
  - a. Ocean waters found near the equator are usually \_\_\_\_\_; ocean waters found near the \_\_\_\_\_ are usually cold.
  - b. The \_\_\_\_\_ is located between the island continent of \_\_\_\_\_ and the islands of New Zealand.
  - c. The northernmost ocean is the \_\_\_\_\_ while the Southern Ocean is the \_\_\_\_\_ ocean.
  - d. A European sea that is almost enclosed by land is the \_\_\_\_\_.
  - e. The \_\_\_\_\_ Ocean is the largest of the \_\_\_\_\_ oceans.

4. Write the word or phrase from Column B in the space before its description in Column A.

<u>Column A</u>	<u>Column B</u>
_____ a. second largest body of water	Indian Ocean
_____ b. an ocean named after a country	Bering Sea
_____ c. separates Europe from Africa	Yellow Sea
_____ d. a "colorful" sea between Korea and China	Atlantic Ocean
_____ e. a cold body of water located between North America and Eastern Russia	Mediterranean Sea

5. Why is it easier to swim in an ocean or sea than in a lake? \_\_\_\_\_

# Major Ocean Currents



1. Label the ocean currents on the lines above.
2. Circle six warm ocean currents and put a check mark above three cold ocean currents.
3. Draw arrows showing directional flow of the Brazil and Kuroshio currents.
4. Write the word or words that will make each sentence a true statement.
  - a. The phrase "rivers within an ocean" refers to the ocean's \_\_\_\_\_.
  - b. Two ocean currents that affect the coasts of North America are the \_\_\_\_\_ and \_\_\_\_\_ currents.
  - c. The currents below the \_\_\_\_\_ flow in a \_\_\_\_\_ direction.
  - d. The \_\_\_\_\_ current, in the Southern Hemisphere, completely circles the cold continent of \_\_\_\_\_.
  - e. Currents affect the \_\_\_\_\_ of neighboring regions.
5. Write the word or phrase from Column B in the space before its description in Column A.

### Column A

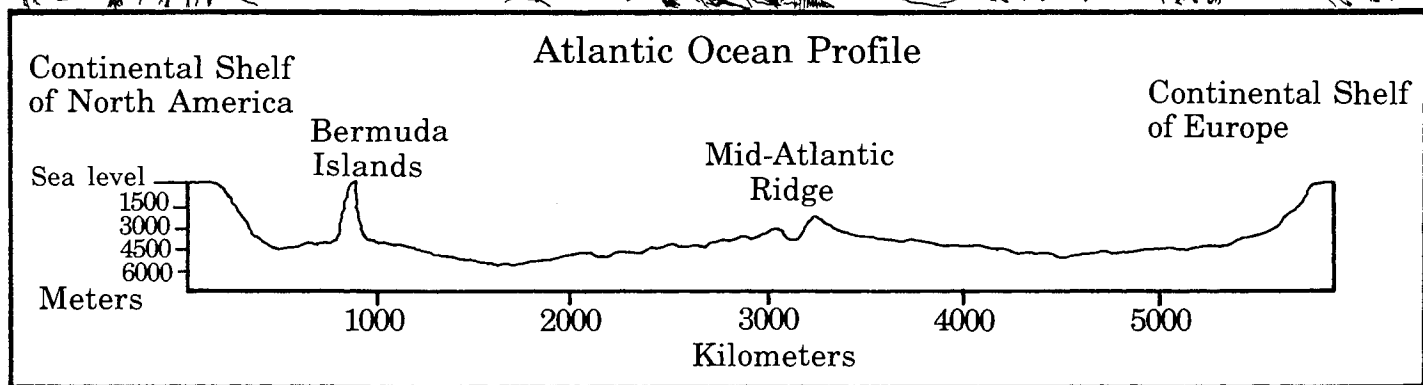
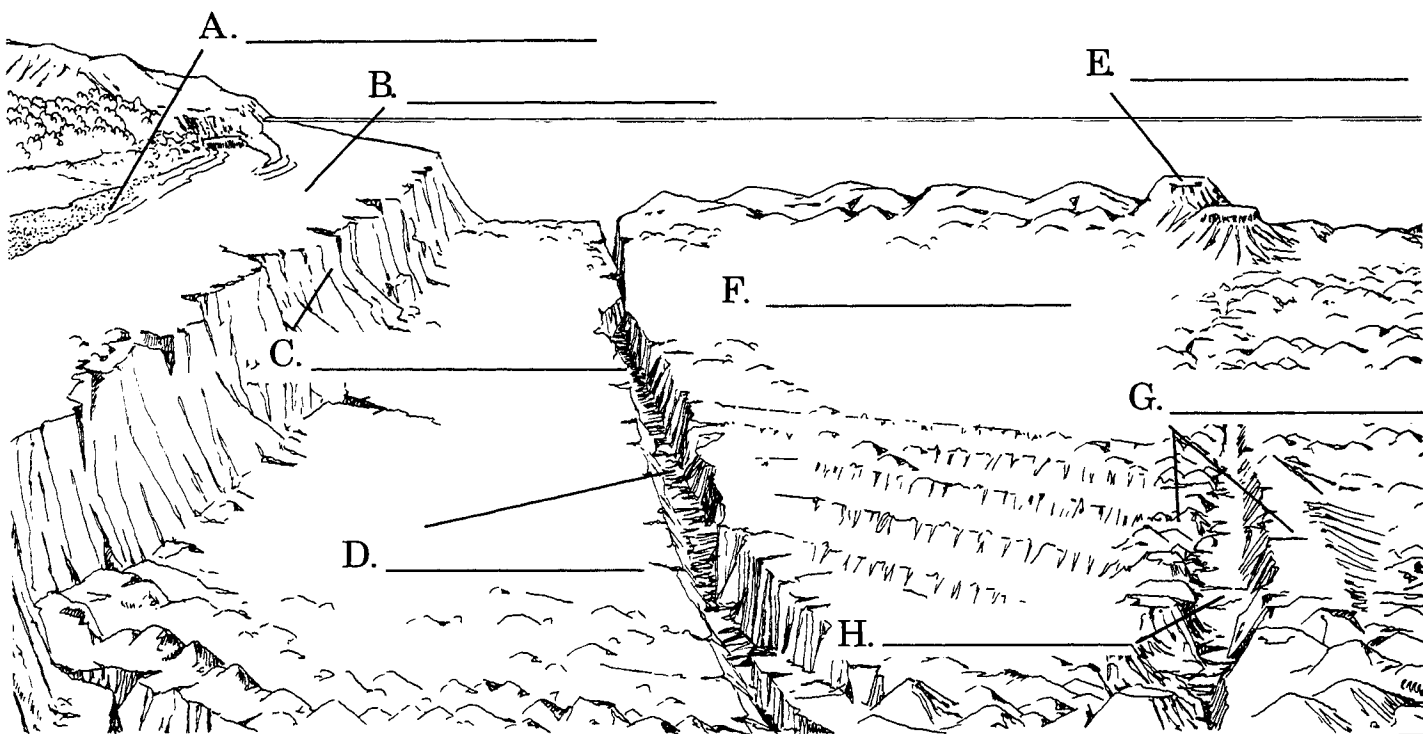
### Column B

_____	a. a cold South American coastal current		North Atlantic Current
_____	b. eastward flowing "rivers"		Humboldt Current
_____	c. a warm ocean current affecting England's climate		currents in the Northern Hemisphere
_____	d. cause currents to change directions		large land masses
_____	e. push surface water in different directions		circulating winds

6. Why did ocean-going sailboats depend on ocean currents? \_\_\_\_\_

\_\_\_\_\_

# The Ocean Profile



1. Label the ocean profile features on the lines above.
2. Identify these features of the ocean basin:
  - a. underwater volcanic mountains \_\_\_\_\_
  - b. land from continent's edge to ocean floor \_\_\_\_\_
  - c. narrow, very deep valleys \_\_\_\_\_
  - d. flat, nearly level areas \_\_\_\_\_
  - e. valleys between ridges \_\_\_\_\_
3. The line which marks the edge of ocean water on land is called the \_\_\_\_\_.
4. What is the distance of the ocean profile shown in the chart above? \_\_\_\_\_
5. Of what features do great underwater mountain ranges consist? \_\_\_\_\_
6. What are islands? \_\_\_\_\_